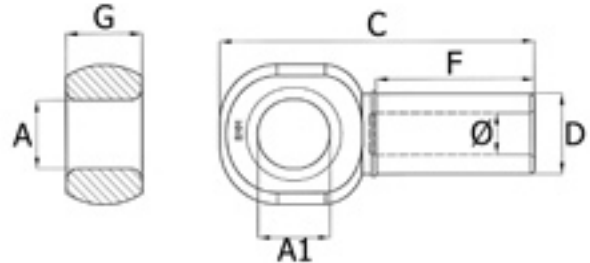


Terminaler for samleled

Terminals for connectors

Terminales por conectores



Vare nr. Part no. Parte no.	A	A1	B	C	D	F	G	Ø	For samleled For connector Por conector	Efter presning After pressing Prenzado	Vægt Weight Peso	Presse bakker Swaging dies Mordazas de prensa	Pressekapacitet Required pressure Potencia de la prensa
	mm	mm	mm	mm	mm	mm	mm	mm	no.	mm	kg		Ton
NE 14 C	26,5	26,5	48	106	32	58	25	14,5	13	28	0,6	DIE-NE-28	250
NE 16 C	26,5	26,5	48	106	32	60	25	16,5	13	28	0,6	DIE-NE-28	250
NE 18 C	30,0	34,0	60	133	41	69	33	18,5	16/19	36	1,2	DIE-NE-36	300
NE 20 C	30,0	34,0	60	141	41	78	33	20,5	16/19	36	1,2	DIE-NE-36	300
NE 22 C	34,0	39,0	72	161	41	84	38	22,5	19/22	36	1,6	DIE-NE-36	300
NE 24 C	34,0	39,0	72	169	41	91	38	24,5	19/22	36	1,6	DIE-NE-36	300
NE 26 C	38,0	41,0	78	185	51	100	40	27,0	22	44	2,5	DIE-NE-44	600
NE 28 C	38,0	48,5	78	193	51	107	40	29,0	22/26	44	2,5	DIE-NE-44	600
NE 30 C	38,0	48,5	78	201	51	116	40	31,0	22/26	44	2,5	DIE-NE-44	600
NE 32 C	38,0	48,5	78	211	51	125	40	33,0	22/26	44	2,5	DIE-NE-44	600
NE 34 C	44,0	49,0	90	240	56	131	40	35,0	26	48	3,4	DIE-NE-48	600
NE 36 C	44,0	49,0	90	250	56	140	40	37,0	26	48	3,3	DIE-NE-48	600

