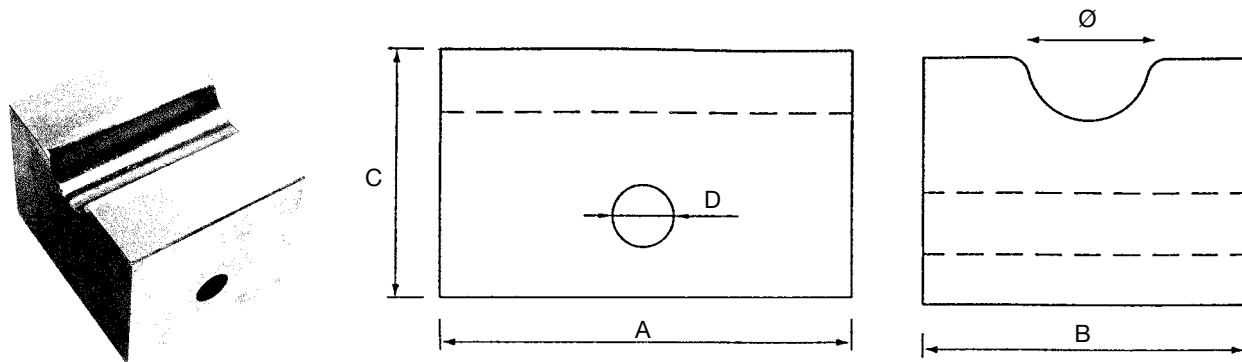


Presse-bakker

Swaging dies

Mordazas de prensa



Vare nr. Part no. Parte no.	A	B	C	D	E	Ø	Bakke nr. Die No.	Vægt Weicht Peso	For terminal For terminal Por terminales
	mm	mm	mm	mm	mm	mm		kg	
DIE-NE-22	68	80	78	15	30	22	11	6,5	NE 10/12
DIE-NE-28	85	80	78	15	30	28	14	8,0	NE 14/16/18 + NE 14/16 C
DIE-NE-36	105	100	78	15	30	36	18	12,0	NE 20/22/24 + NE 18/20/22/24 C
DIE-NE-44	119	100	78	15	30	44	22	13,5	NE 26/28/30 + NE 26/28/30/32 C
DIE-NE-48	126	156	110	18	35	48	24	31,4	NE 34/36 C

Ovenstående pressebakker er cylindriske bakker uden skærekanter.
 Above swaging dies are cylindrical without cuttingedges.
 Estas mordazas son cilíndricas sin diente de corte.